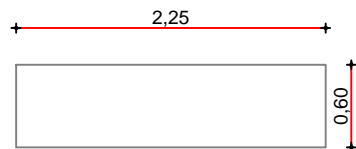
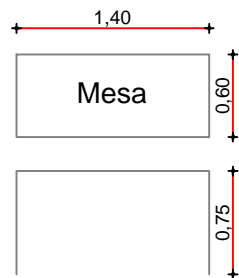


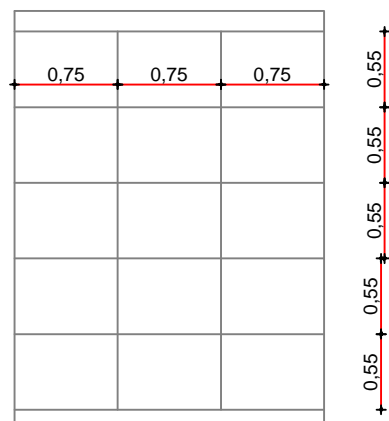
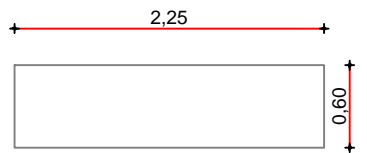
1 UND Armário Vestiário



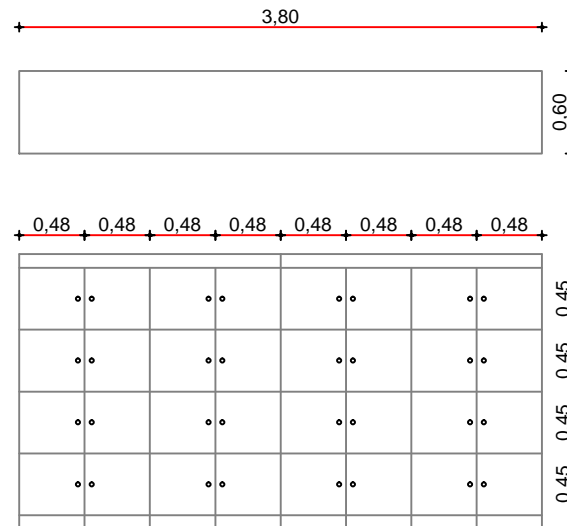
4 UND com 2 chapas
Prateleiras com Mão Francesa
Depósitos Salas



2 und Mesa



2 UND Prateleiras Depósitos



1 UND Armário Professores

As medidas deverão ser verificadas "in loco"

Os materiais deverão ser em MDF
Mínimo de 1,5cm de espessura

Sendo as Mesas e as Prateleiras 2 cm de espessura

As cores deverão ser consultadas

Armários com chave

