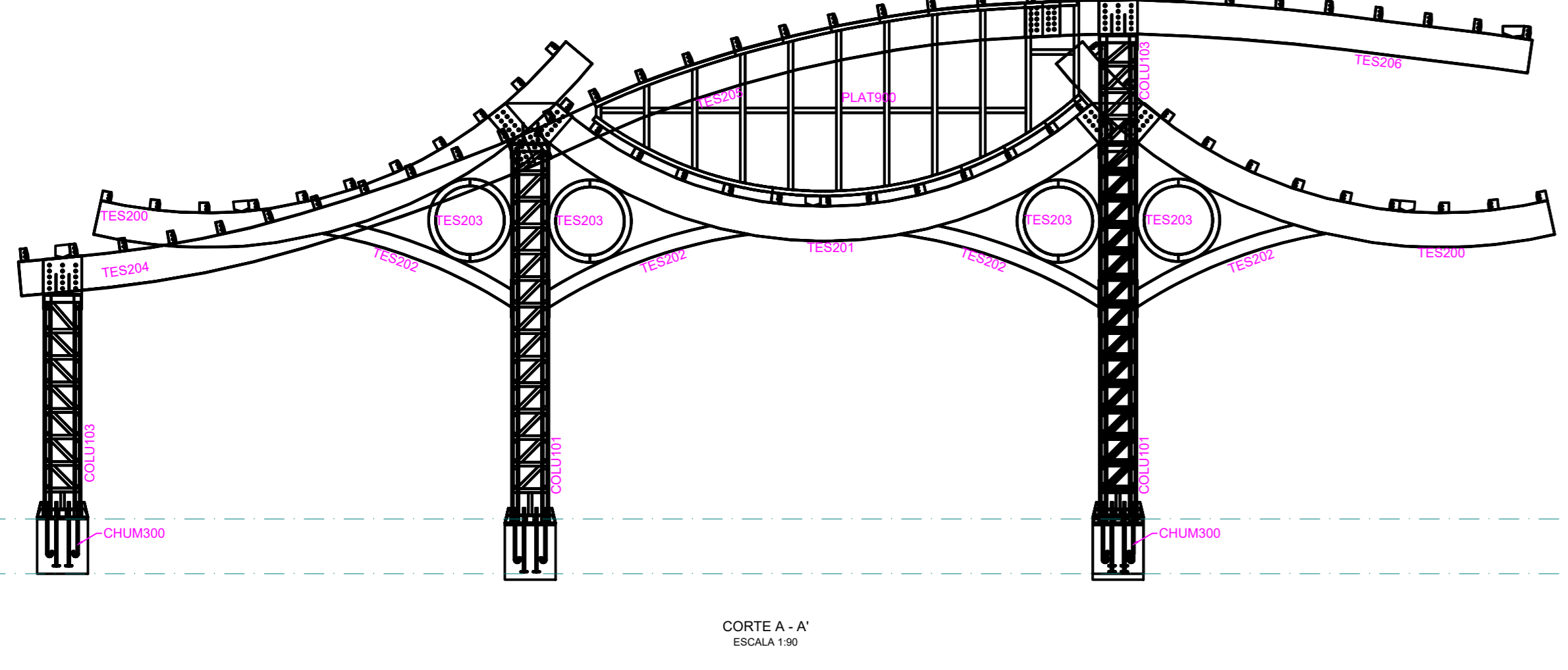
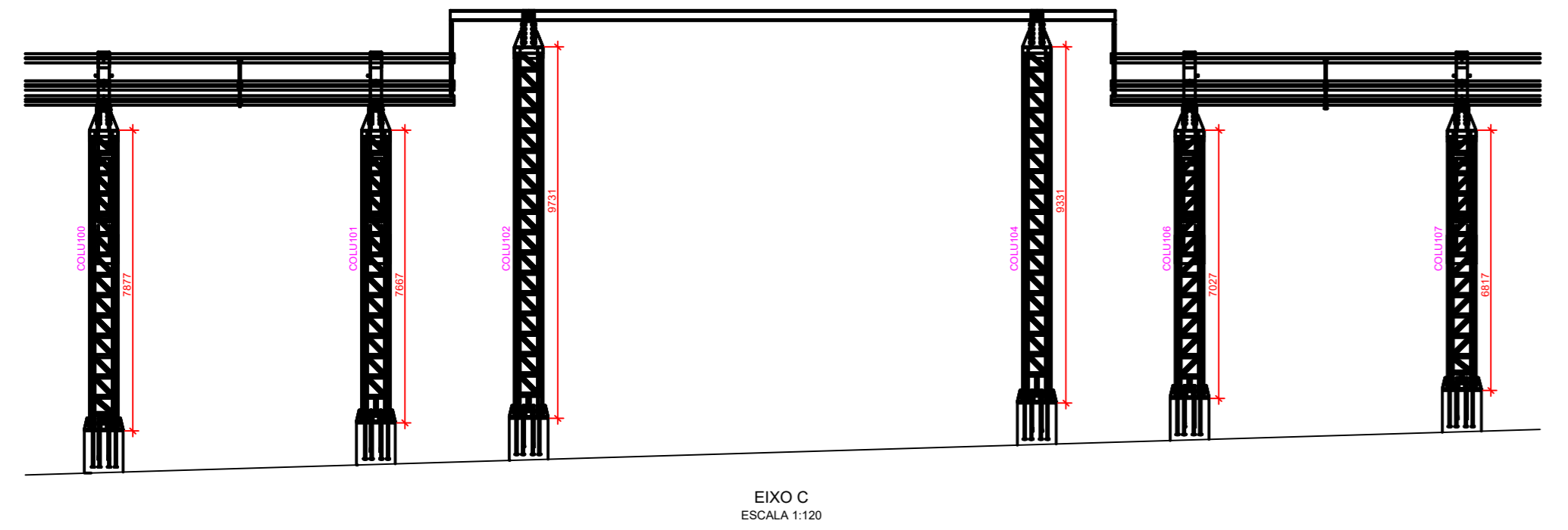
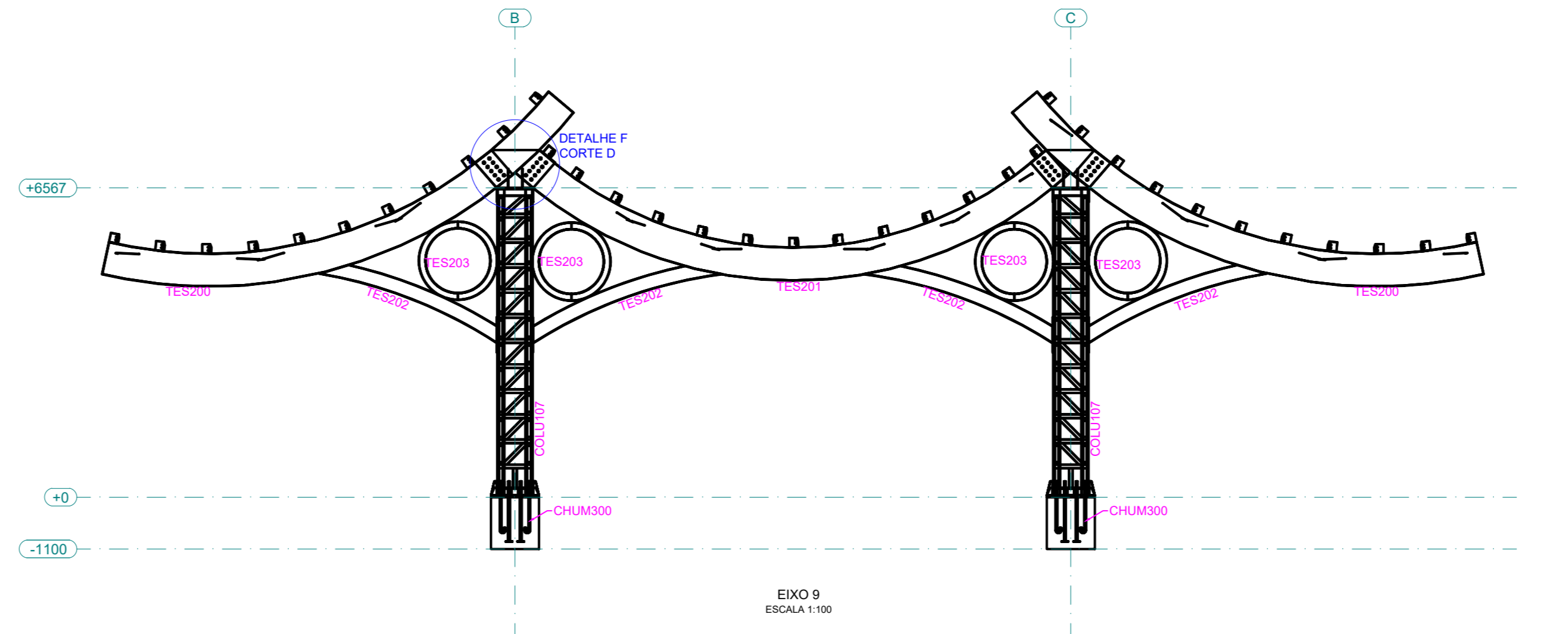
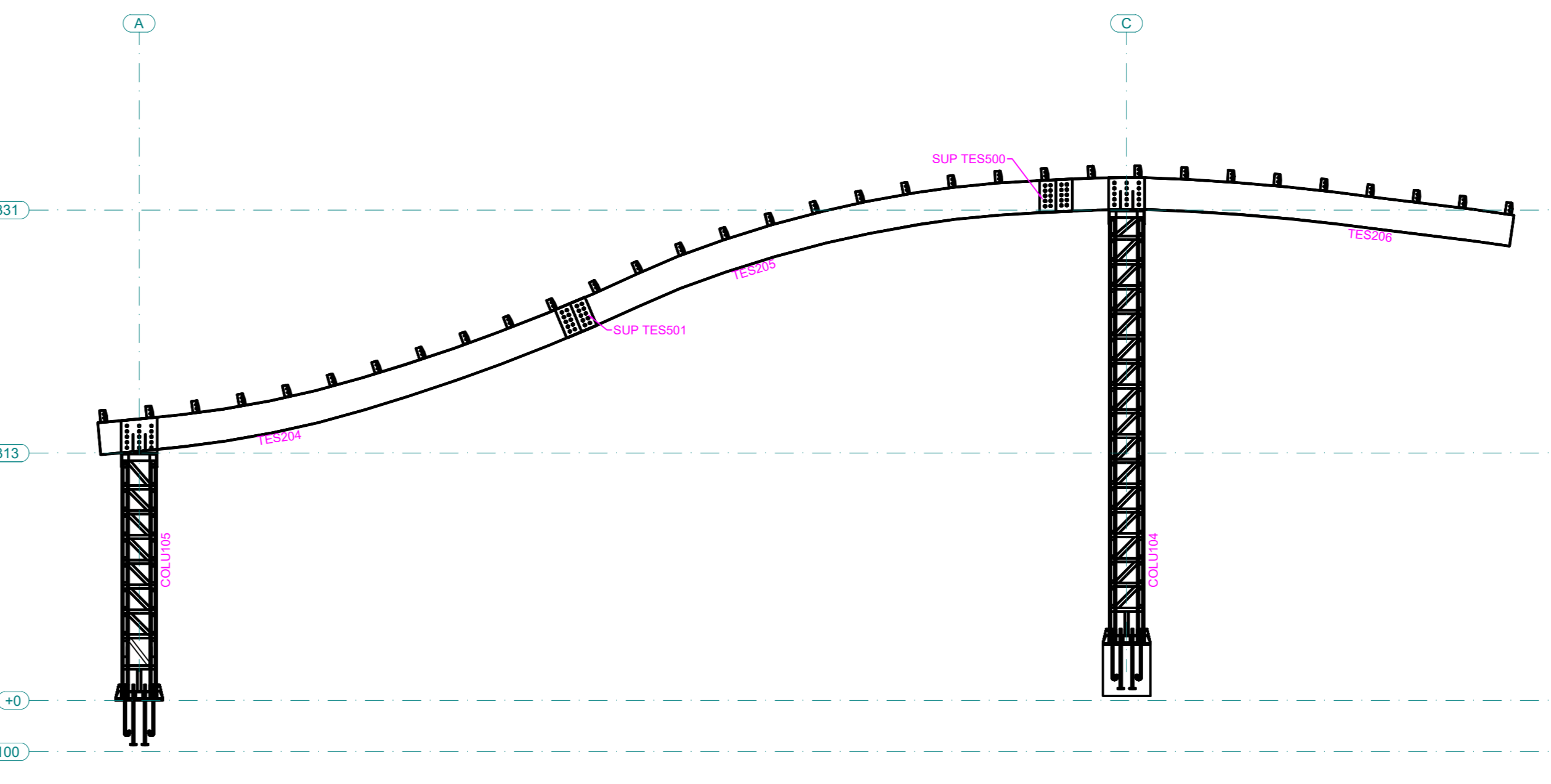
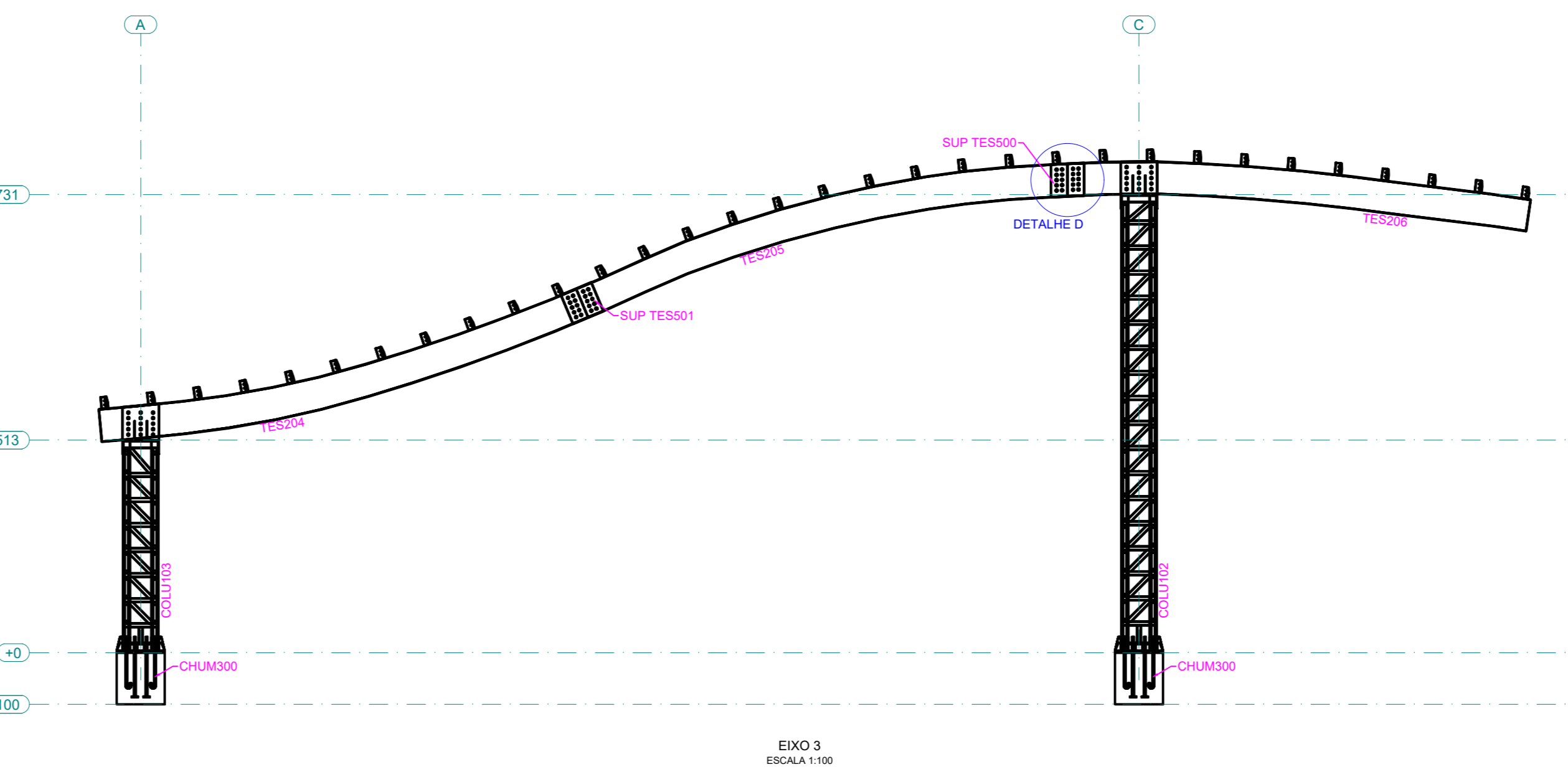
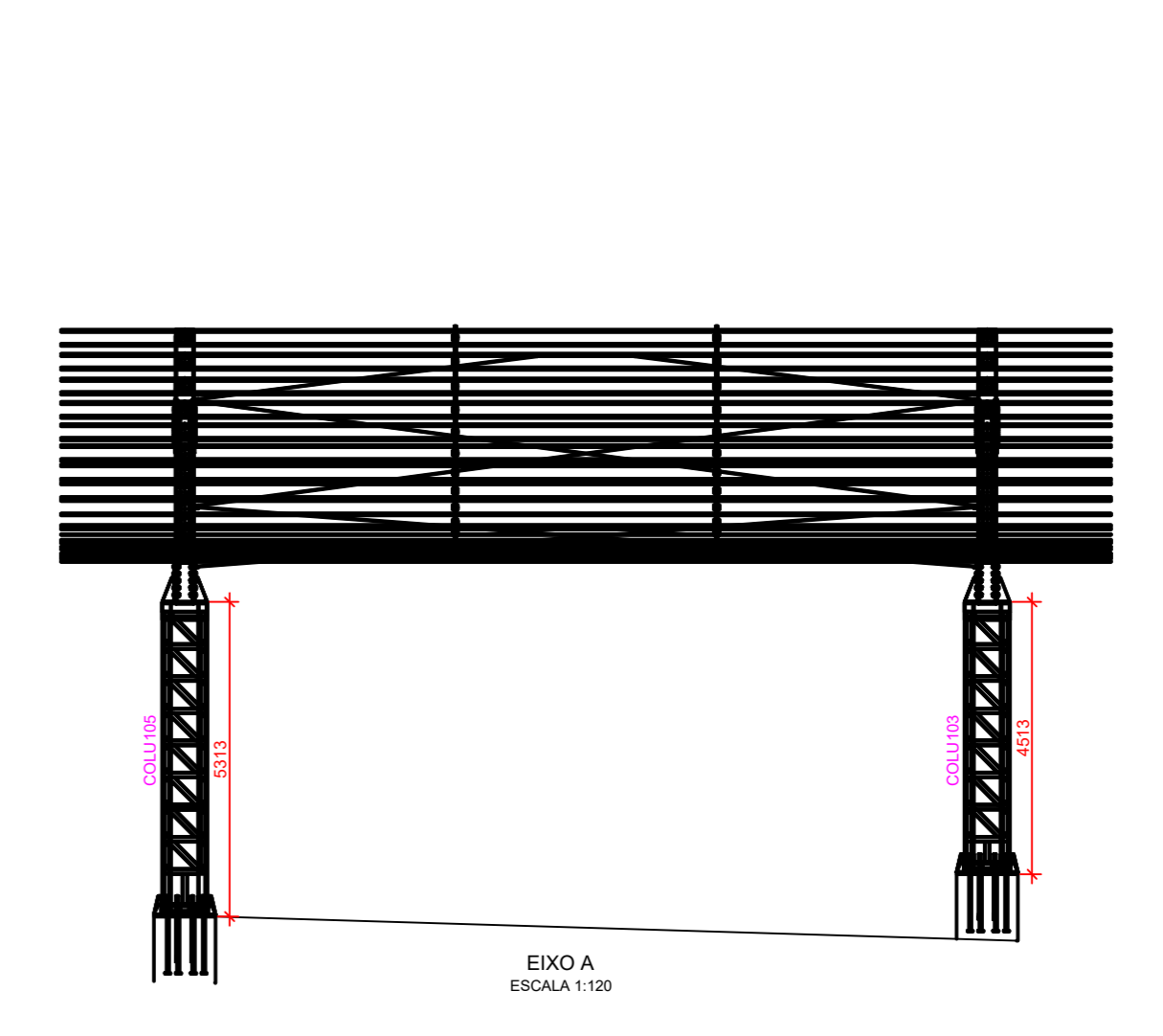
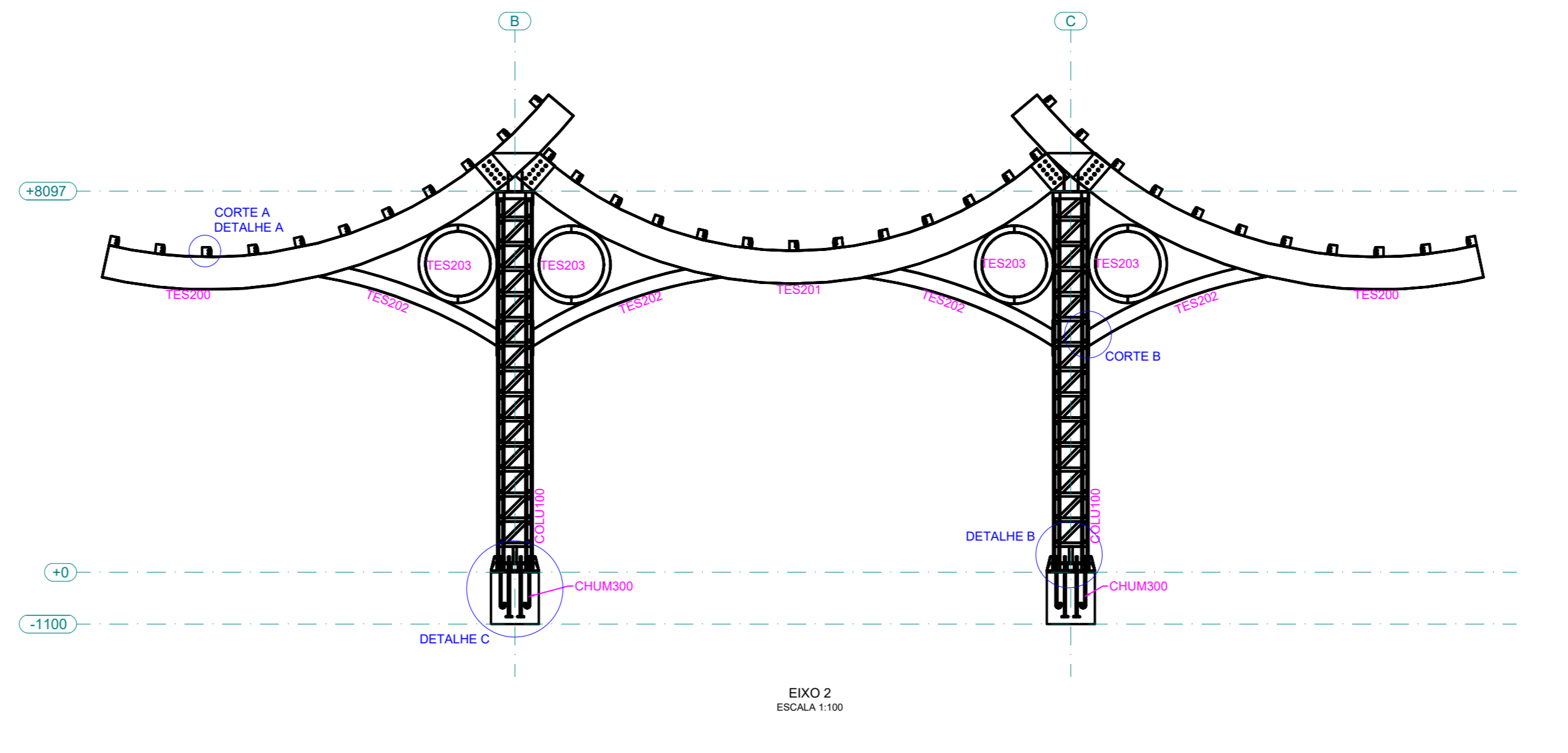
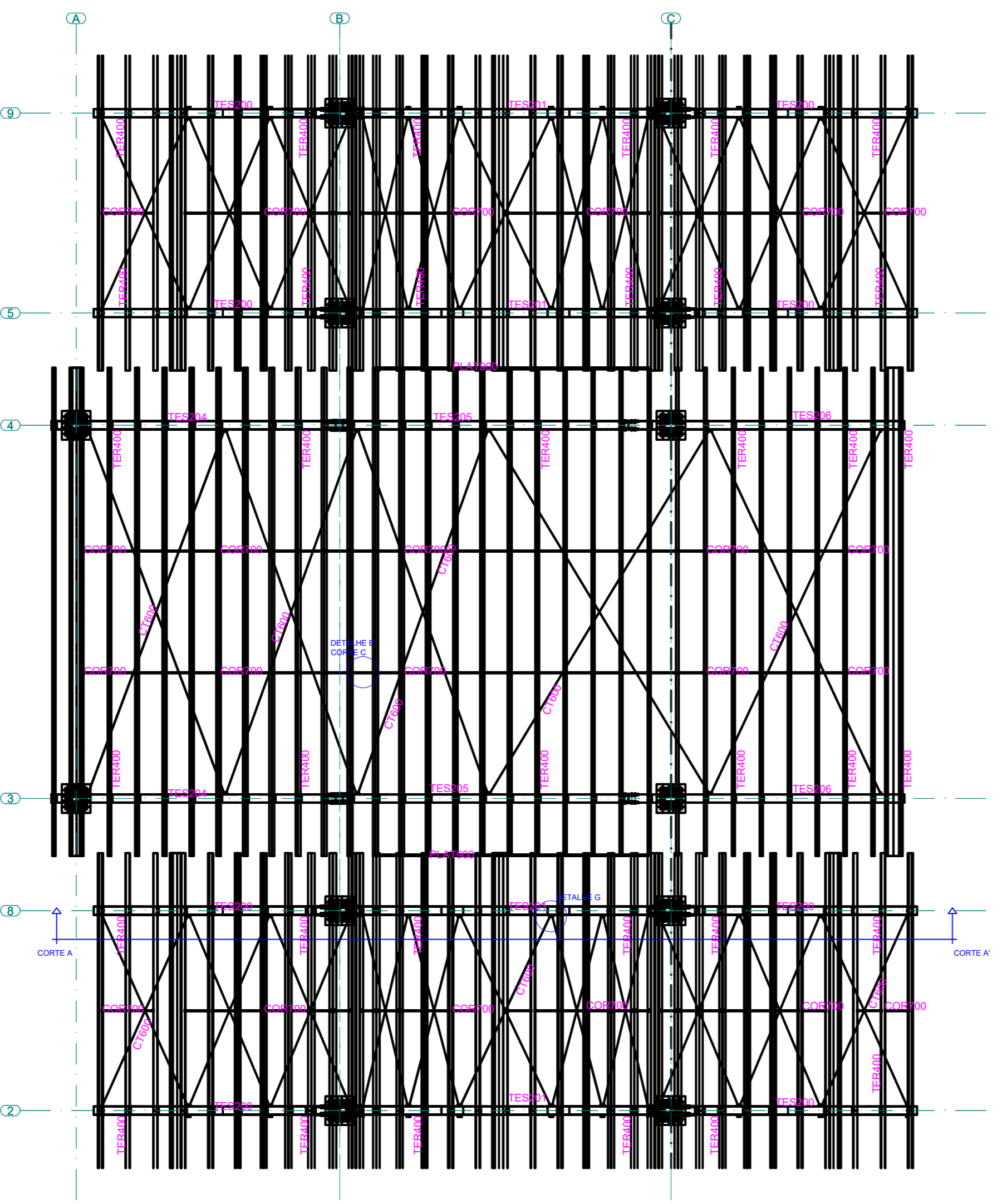


ESPECIFICAÇÃO DE COLUNAS

QTD	NÚMERO	COMPRIMENTO DA COLUNA (MM)
2	COLU100	7877
2	COLU101	7667
1	COLU102	9733
1	COLU103	4533
1	COLU104	9331
1	COLU105	5113
2	COLU106	7027
2	COLU107	6817



VISTA 3D

CORTE A  
ESCALA 1:30

DETALHE A  
ESCALA 1:30

VISTA 3D

DETALHE B  
ESCALA 1:30

VISTA 3D

CORTE B  
ESCALA 1:30

VISTA 3D

DETALHE C  
ESCALA 1:30

VISTA 3D

ESTICADOR PESADO

DETALHE G  
ESCALA 1:30

VISTA 3D

DETALHE D  
ESCALA 1:30

VISTA 3D

CORTE C  
ESCALA 1:30

DETALHE E  
ESCALA 1:30

VISTA 3D

DETALHE F  
ESCALA 1:30

VISTA 3D

CORTE D  
ESCALA 1:30

LISTA DE MATERIAIS

MARCA	MATERIAL	UNID. MED.	QTD.	PESO TOTAL (Kg)
COLU100-107	TQ 150X6.35 (A572-G50)	MT	399.74	11532.50
	TQ80X3 (A572-G50)	MT	659.43	4810.21
	CH 1020X1020 #38 (A572-G50)	LN	12	3724.20
	CH 750X750 #9.53 (A572-G50)	LN	16	673.28
	CH 170X808 #15.88 (A572-G50)	LN	16	2746.72
	CH 400X207 #12.7 (A572-G50)	LN	48	389.36
	CH 704X715 #15.88 (A572-G50)	LN	4	272.12
	CH 778X775 #15.88 (A572-G50)	LN	4	306.84
	CH 750X750 #15.88 (A572-G50)	LN	12	841.44
	CH 300X200 #3.17 (A572-G50)	LN	62	1396.66
	CH 160X122 #12.7 (A572-G50)	LN	96	193.92
	CH 300X122 #12.7 (A572-G50)	LN	96	351.36
	CH 450X150 #15.88 (A572-G50)	LN	48	403.68
	CH 150X75 #9.53 (A572-G50)	LN	72	60.48
	CH 750X750 #9.53 (A572-G50)	LN	52	14.56
	CH 700X443 #25.4 (A572-G50)	LN	16	1000.96
	CH 300X200 #6.35 (A572-G50)	LN	140	418.60
CH 300X400 #6.35 (A572-G50)	LN	204	122.40	
CH 194X400 #6.35 (A572-G50)	LN	140	53.20	
CH 250X300 #6.35 (A572-G50)	LN	64	239.36	
CH 244X400 #6.35 (A572-G50)	LN	64	31.36	
CH 702X423 #25.4 (A572-G50)	LN	16	947.20	
CH 844X881 #25.4 (A572-G50)	LN	4	458.88	
CH 350X617 #25.4 (A572-G50)	LN	16	722.24	
CH 775X895 #25.4 (A572-G50)	LN	4	423.44	
CH 700X290 #4.75 (A572-G50)	LN	8	60.56	
CH 703X290 #4.75 (A572-G50)	LN	8	60.88	
CH 663X290 #4.75 (A572-G50)	LN	2	14.34	
CH 881X290 #4.75 (A572-G50)	LN	2	14.72	
CH 1056X203 #6.35 (A572-G50)	LN	16	1944.56	
CH 10402.57X300 #6.35 (A572-G50)	LN	8	1244.48	
CH 11154.22X300 #6.35 (A572-G50)	LN	8	1334.40	
CH 11789.37X300 #6.35 (A572-G50)	LN	4	704.96	
CH 12939.37X300 #6.35 (A572-G50)	LN	4	774.00	
CH 11778X297 #6.35 (A572-G50)	LN	8	1366.40	
CH 4105.12X300 #6.35 (A572-G50)	LN	16	982.24	
CH 3432.85X300 #6.35 (A572-G50)	LN	16	827.28	
CH 4076X48 #6.35 (A572-G50)	LN	32	386.56	
CH 1150X1191 #6.35 (A572-G50)	LN	64	4369.92	
CH 2159.40X300 #6.35 (A572-G50)	LN	32	1033.28	
CH 2820.38X300 #6.35 (A572-G50)	LN	32	1254.08	
CH 10657X250 #6.35 (A572-G50)	LN	4	3974.80	
CH 10505.12X300 #9.53 (A572-G50)	LN	2	470.08	
CH 10718.69X300 #9.53 (A572-G50)	LN	2	479.60	
CH 10766X285 #9.53 (A572-G50)	LN	4	4128.16	
CH 10577.83X300 #9.53 (A572-G50)	LN	2	473.30	
CH 10852.80X300 #9.53 (A572-G50)	LN	2	485.60	
CH 8861X851 #9.53 (A572-G50)	LN	4	2795.96	
CH 9795.50X300 #9.53 (A572-G50)	LN	2	437.62	
CH 9879.50X300 #9.53 (A572-G50)	LN	2	442.08	
CHUM300	BARRA RED. 1.102" (A572-G50)	MT	178.1	1594.00
	CH 90X138 #15.88 (A572-G50)	LN	96	147.84
TERR400	TR250X150X3 (A572-G50)	MT	783.35	12713.77
	TR250X100X4.25 (A572-G50)	MT	556.66	12729.82
SUP TESS00-501	CH 734X689 #15.88 (A572-G50)	LN	4	255.96
	CH 700X686 #15.88 (A572-G50)	LN	4	232.40
CT600	CABO DE AÇO AA 6X19 5/16"	MT	462.41	1784.15
	TR500X202.65 (A572-G50)	MT	98.96	311.72
CORT100	CH 700X686 #7.75 (A572-G50)	LN	192	28.80
	TR100X50X2.65 (A572-G50)	MT	70	427.00
PLAT900	CH 9979.21X42.5 #3.75 (A572-G50)	LN	2	24.96
	CH 10018.56X42.5 #3.75 (A572-G50)	LN	2	25.06
	CH 11196.41X42.5 #3.75 (A572-G50)	LN	2	28.00
	CH 10839.60X42.5 #3.75 (A572-G50)	LN	2	26.62
	CH 100300 #3.75 (A572-G50)	LN	8	1.20
	CH 10639.45X100 #3.75 (A572-G50)	LN	4	125.28
CH 10018.56X100 #3.75 (A572-G50)	LN	2	56.98	
<b>PESO TOTAL (AÇO)</b>				<b>125.950,35</b>

APROVAÇÕES

PROPRIETÁRIO: PREFEITURA MUNICIPAL DE PIRATUBA

RESPONSÁVEL TÉCNICO: EMERSON FERRARI

EQUIPE TÉCNICA DA EMPRESA:

EMERSON FERRARI (Engenheiro Mecânico) / MAURICIO CERUTTI (Arquiteto e Urbanista)

JAMIE F. SCHMIDT COSTA (Engenheiro Civil) / RENATO BERGAMO (Engenheiro Eletricista)

PROJETO: DETALHAMENTO DE MONTAGEM DE ESTRUTURAS METÁLICAS

LOCALIZAÇÃO: RUA COBERTA DE PIRATUBA, BAIRRO: Centro, Piratuba - SC

DATA: 20.02.2023

ETAPA: PROJETO EXECUTIVO

INDICADA: M02-05