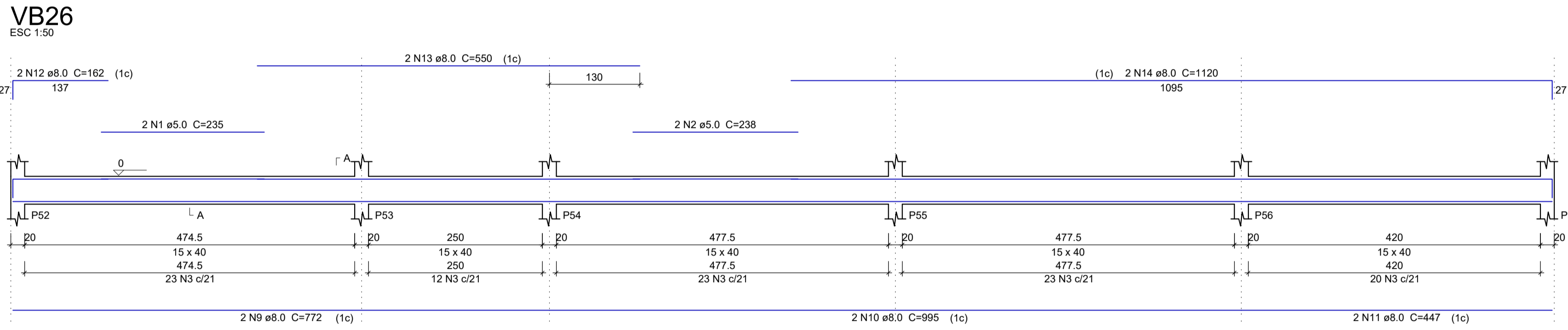
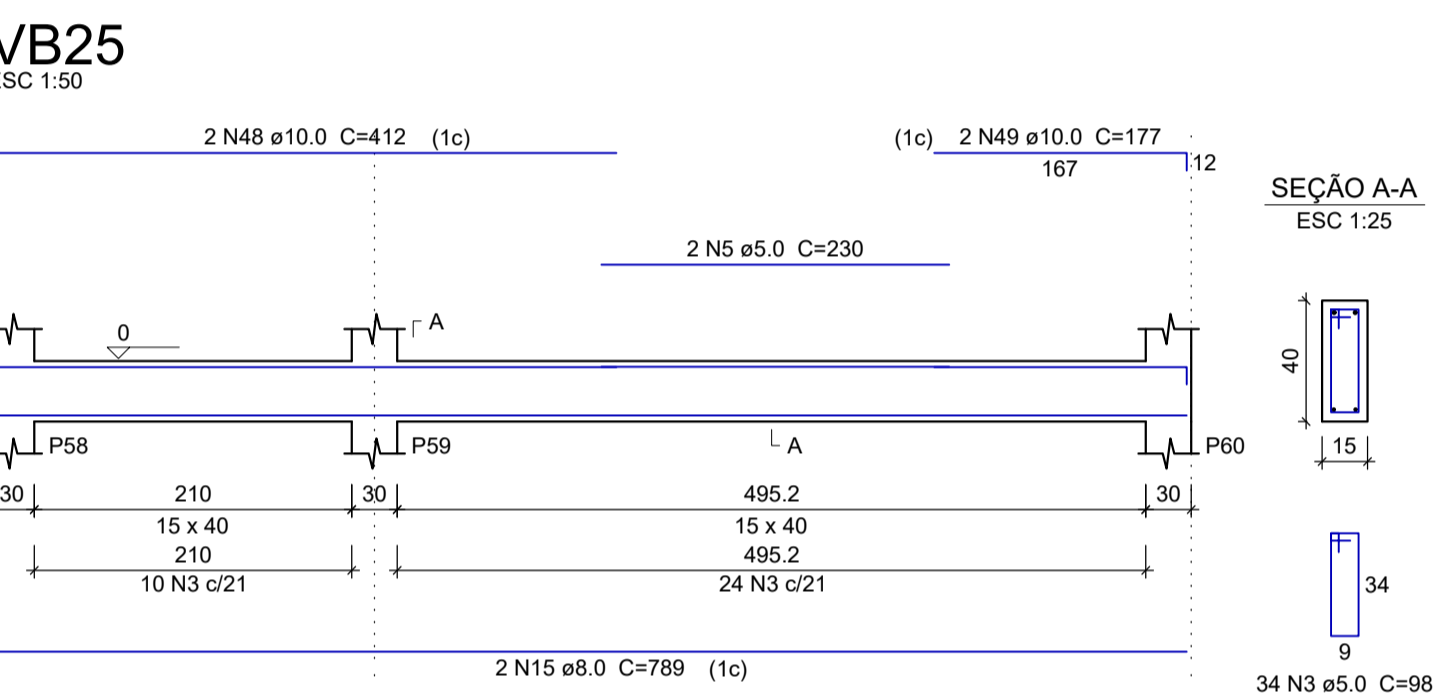
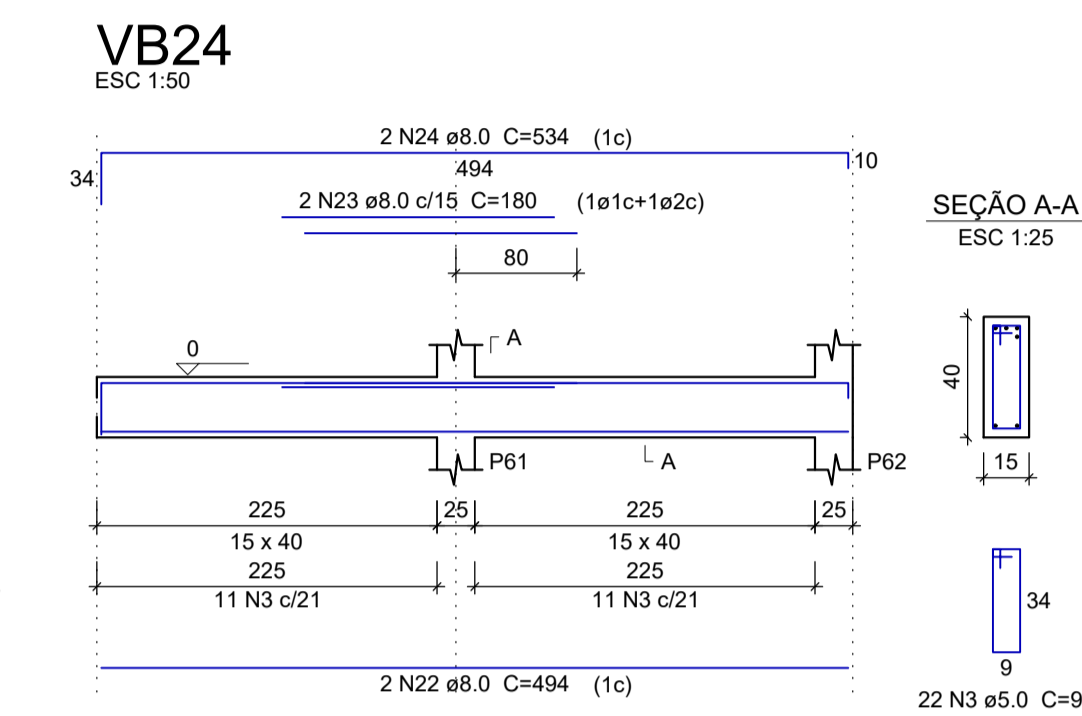
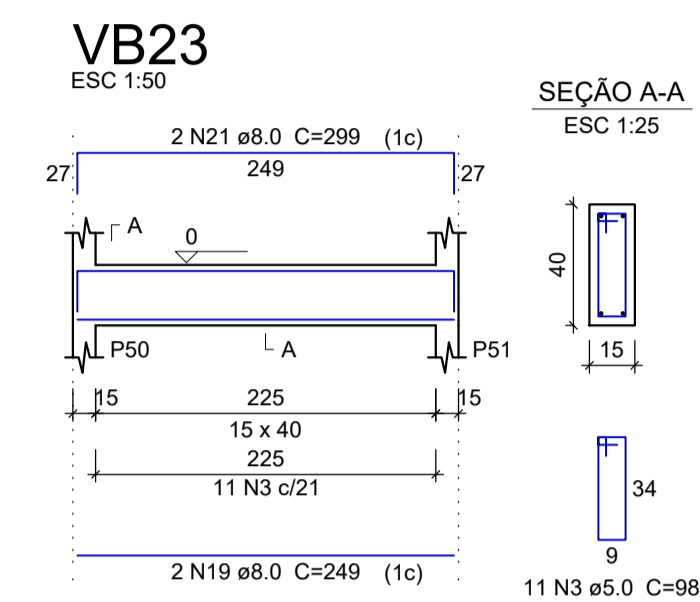
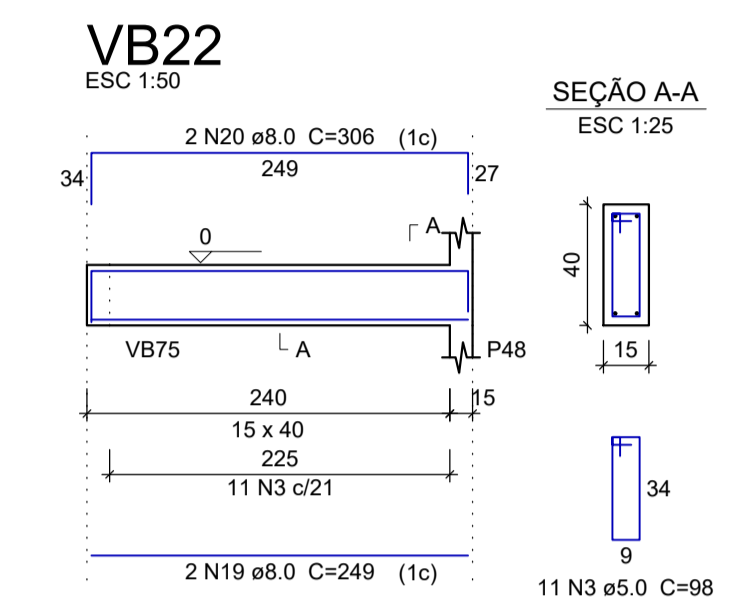
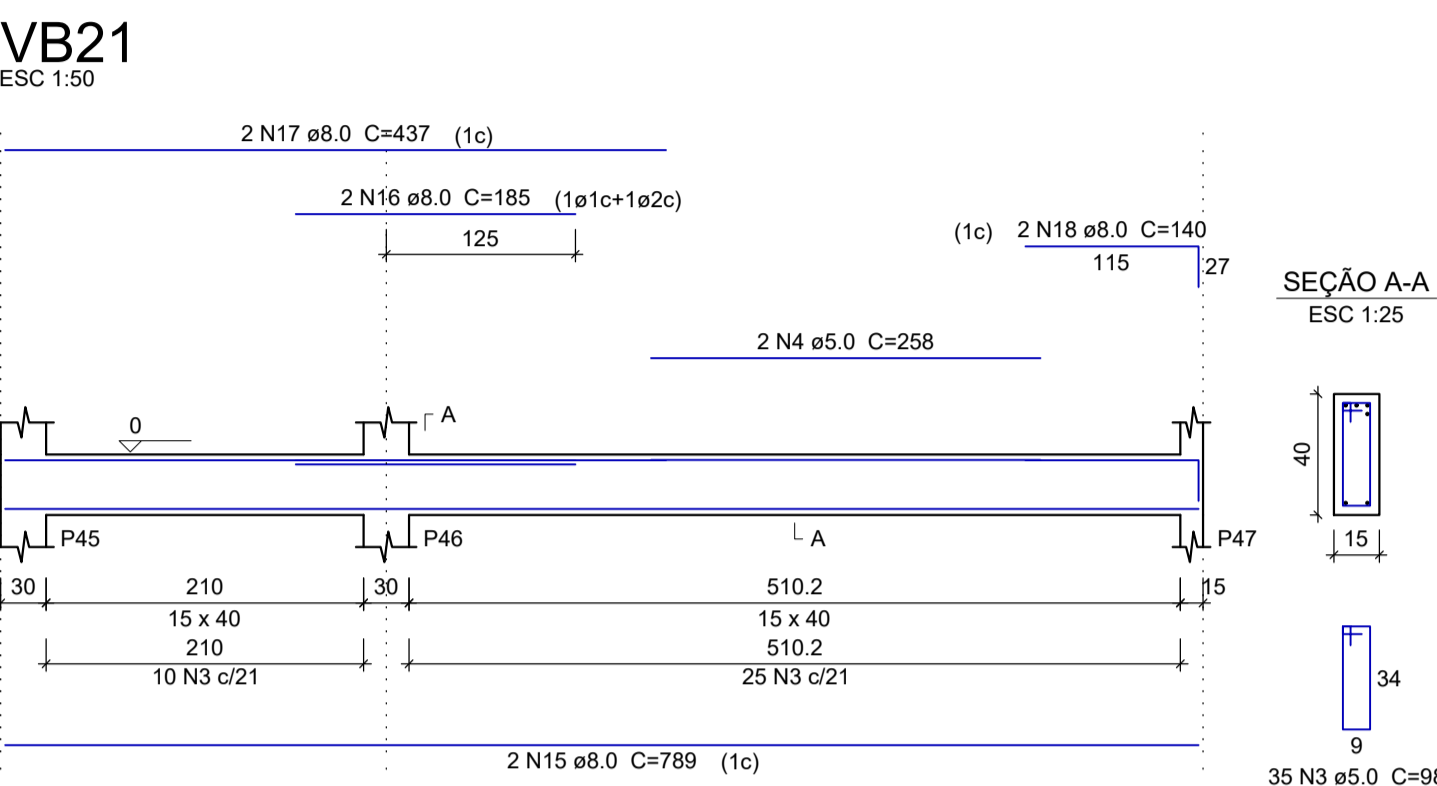


Relação do aço

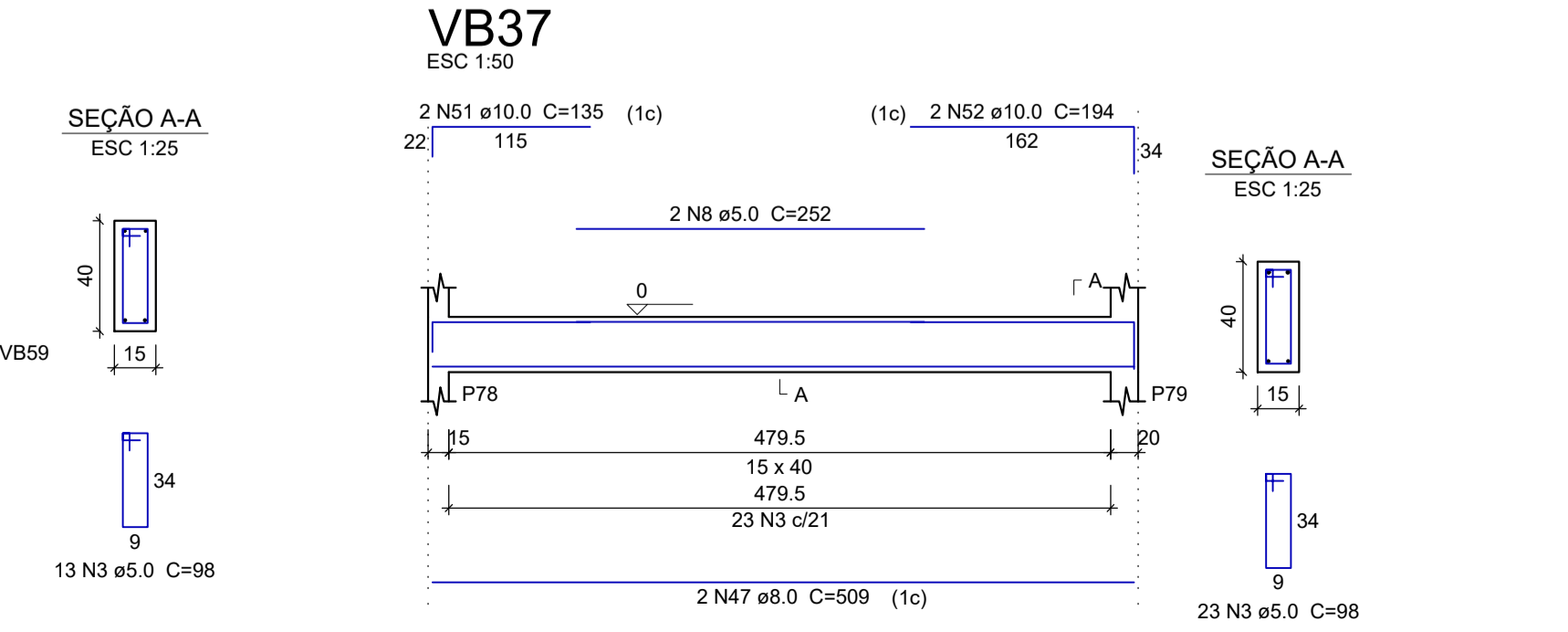
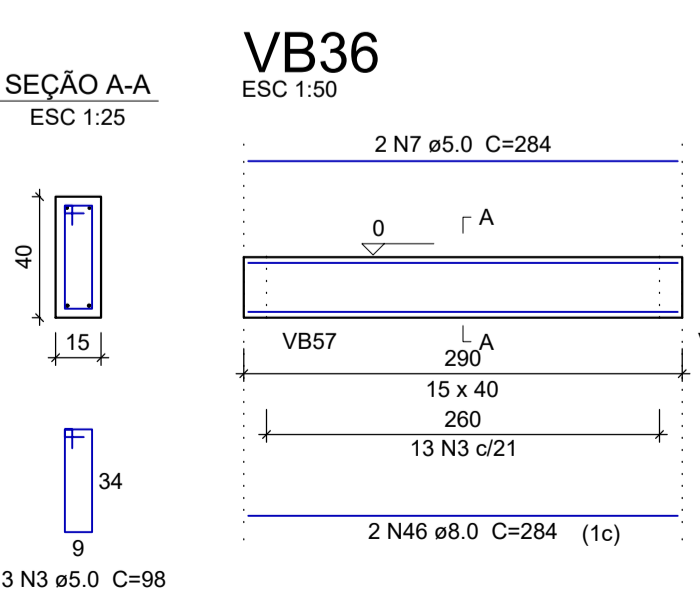
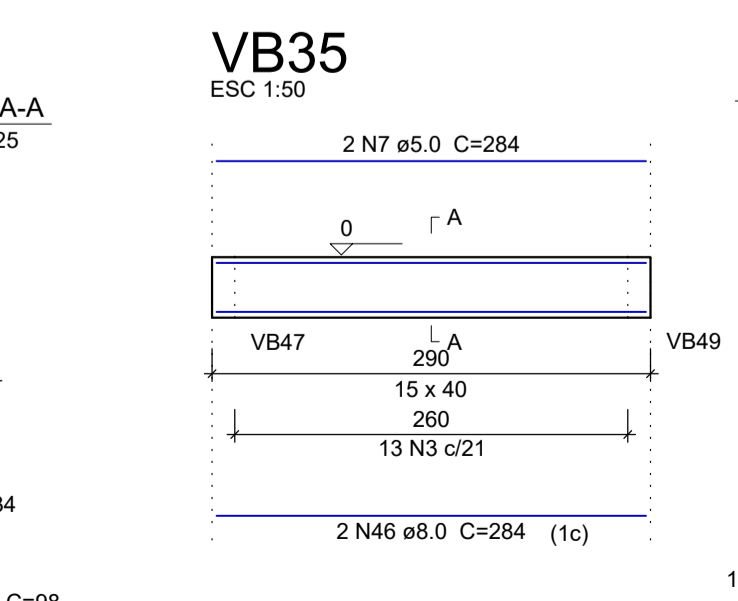
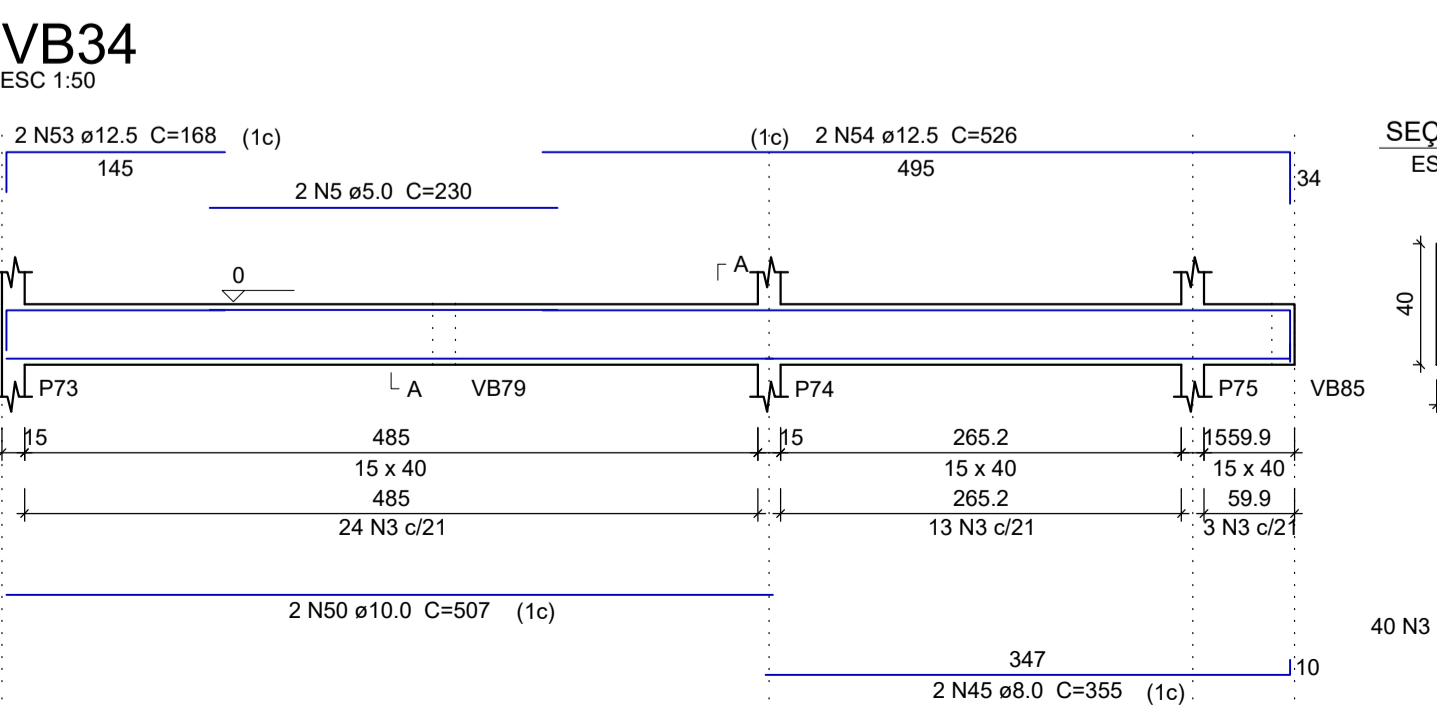
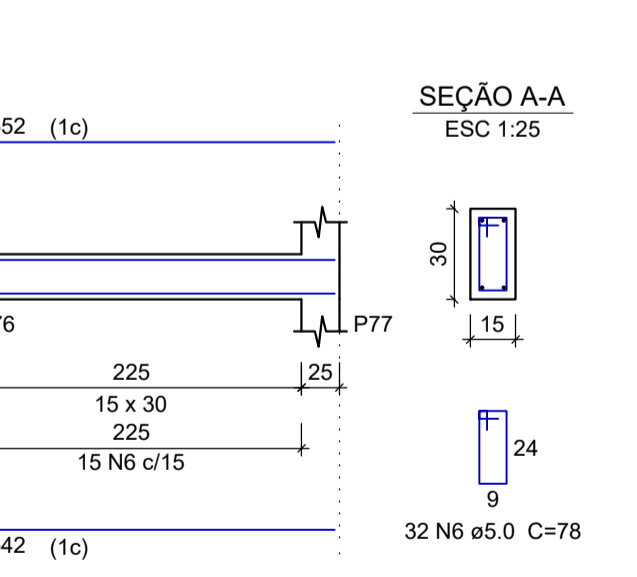
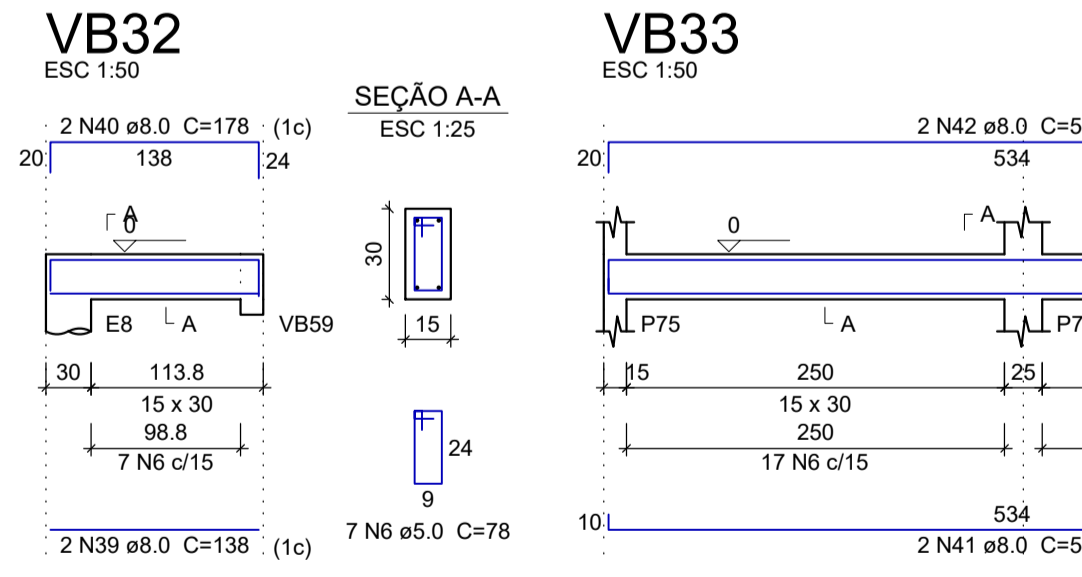
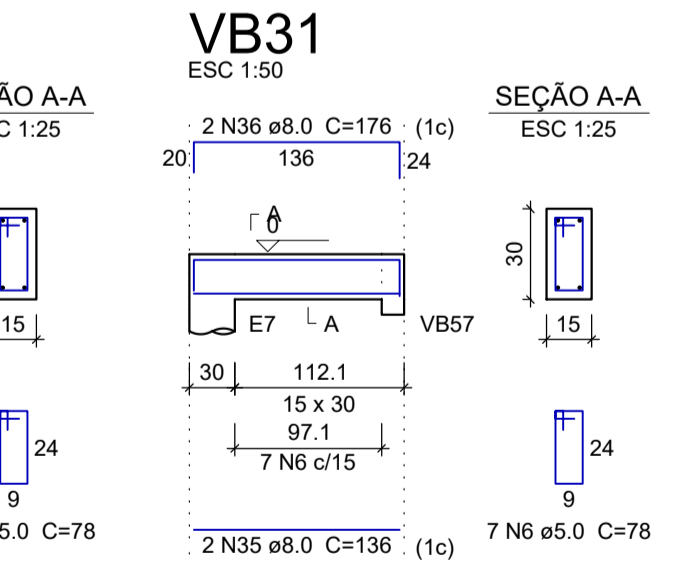
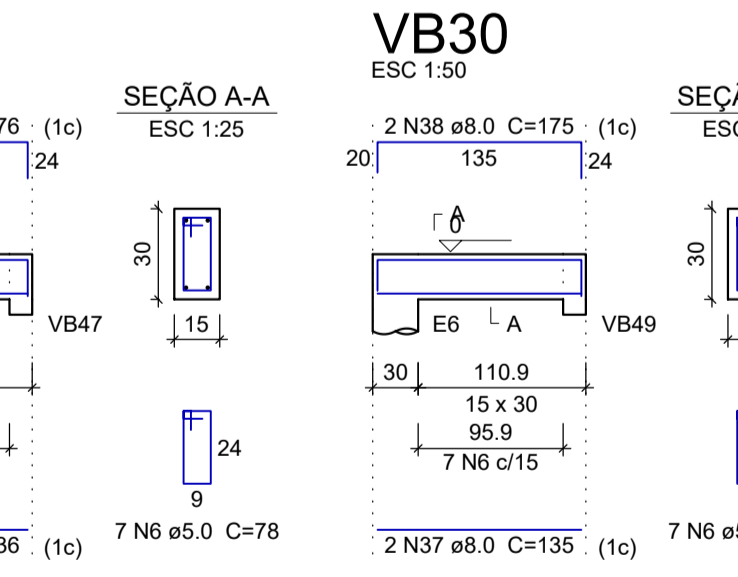
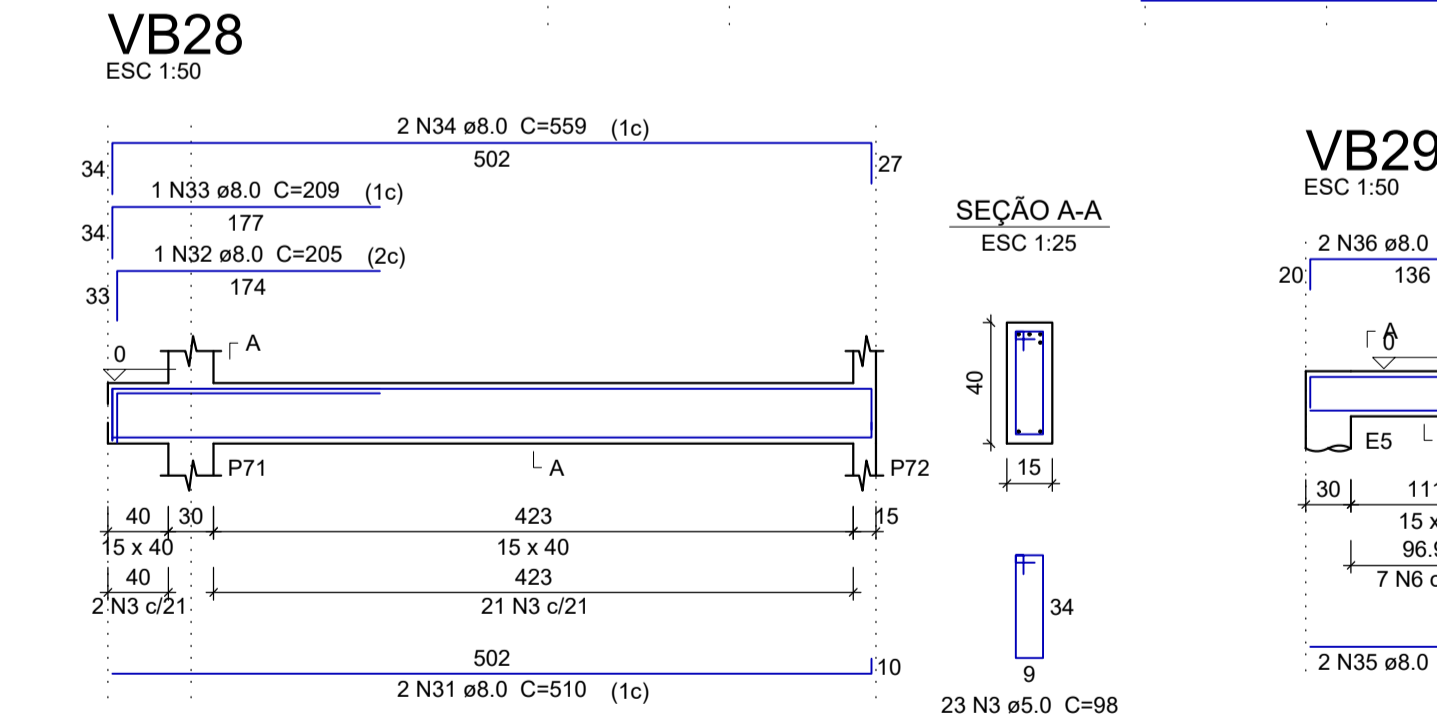
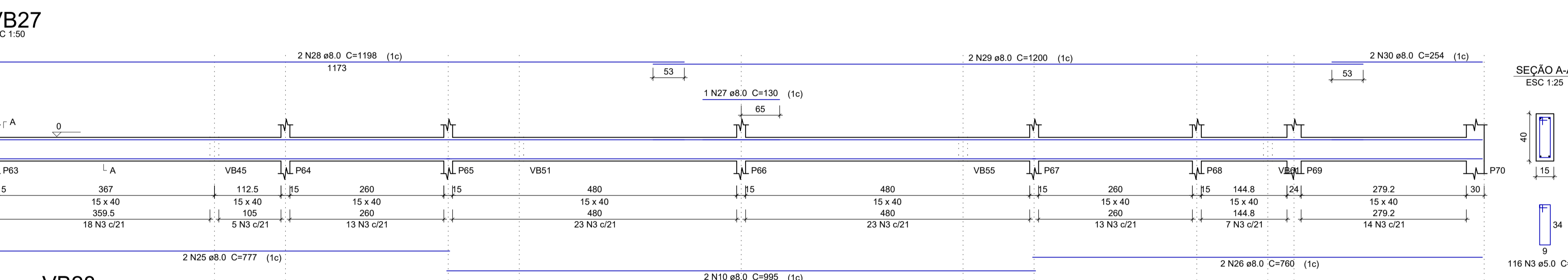
ACO	N	DIAM (mm)	QUANT (Barras)	UNIT (cm)	C.TOTAL (cm)
CA60	1	5.0	4	235	940
	2	5.0	4	238	952
	3	5.0	579	98	56742
	4	5.0	2	258	516
	5	5.0	4	230	920
	6	5.0	60	78	4680
	7	5.0	4	284	1136
	8	5.0	2	252	504
CA50	9	8.0	4	772	3088
	10	8.0	6	995	5970
	11	8.0	4	447	1788
	12	8.0	4	162	648
	13	8.0	4	550	2200
	14	8.0	4	1120	4480
	15	8.0	4	789	3156
	16	8.0	2	185	370
	17	8.0	2	437	874
	18	8.0	2	140	280
	19	8.0	4	249	996
	20	8.0	2	306	612
	21	8.0	2	299	598
	22	8.0	2	494	988
	23	8.0	2	180	360
	24	8.0	2	534	1068
	25	8.0	2	777	1554
	26	8.0	2	760	1520
	27	8.0	1	130	130
	28	8.0	2	1198	2396
	29	8.0	2	1200	2400
	30	8.0	2	254	508
	31	8.0	2	510	1020
	32	8.0	1	205	205
	33	8.0	1	209	209
	34	8.0	2	559	1118
	35	8.0	4	136	544
	36	8.0	4	176	704
	37	8.0	2	135	270
	38	8.0	2	175	350
	39	8.0	2	138	276
	40	8.0	2	178	356
	41	8.0	2	542	1084
	42	8.0	2	552	1104
	43	8.0	2	782	1564
	44	8.0	2	824	1648
	45	8.0	2	355	710
	46	8.0	4	284	1136
	47	8.0	2	509	1018
	48	10.0	2	412	824
	49	10.0	2	177	354
	50	10.0	2	507	1014
	51	10.0	2	135	270
	52	10.0	2	194	388
	53	12.5	2	168	336
	54	12.5	2	526	1052



Resumo do aço

ACO	DIAM (mm)	C.TOTAL (m)	PESO (kg)	PESO TOTAL (kg)
CA50	8.0	493	194.5	CA50 225.5
	10.0	28.5	17.6	CA60 102.3
CA60	5.0	663.9	102.3	

Volume de concreto (C-25) = 8.18 m³
Área de forma = 129.96 m²



Carimbos

Assinaturas

JULIANO DE LIMA
Engenheiro Civil - CREA/SC 147.428-0

MUNICÍPIO DE PIRATUBA
CNPJ: 82.815.481/0001-58
Magrid Auler - Secretária de Educação e Esportes

ESTRUTURA DE CONCRETO

Proprietário
MUNICÍPIO DE PIRATUBA - SC

Endereço
Rua Boa Vista, Lote 01 da Quadra 06, Centro, Piratuba - SC

Descrição
Escola de Educação Infantil - Creche

Data
Outubro/2021

Escalas Indicadas

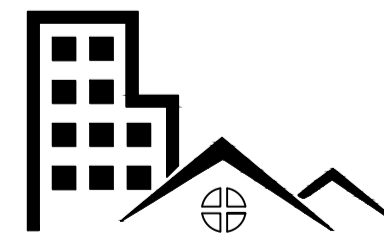
Conteúdo da prancha
-Planta e seção das estruturas da baldrame

Autoria
TRANS GABRIELLI LTDA
CNPJ: 04.265.445/0001-54
CREA/SC 150.789-5
Responsável: Eng. Juliano de Lima

Número de Pavimentos
01

Área Total
838,12m²

Prancha
ECO08
de 15



TRANS GABRIELLI LTDA
CREA/SC 150.789-5